



# WELCOME TO CURRICULUM NIGHT!

MS. KARI YOUNG  
YOUNGK@ISSAQUAH.WEDNET.EDU

PLEASE HAVE A SEAT AT  
YOUR CHILD'S DESK!



# ABOUT MS. YOUNG

+ BA & MA from Michigan State University

- × Major: Elementary Education
- × Specialization: Language Arts
- × Minor: Teaching English as a Second Language
- × Masters in Educational Technology



+ 6<sup>th</sup> year at IVE, 9<sup>th</sup> year teaching 5<sup>th</sup> grade



# CLASSROOM INFORMATION



## ✧ COMMUNICATION TO PARENTS & GUARDIANS

- + Whole class communication is sent through email
  - ✗ Need another parent/guardian added to the list?
- + Classroom Newsletter will be sent out every other Friday via email
  - ✗ Also posted to our classroom website

Email is the  
best way to  
reach me!

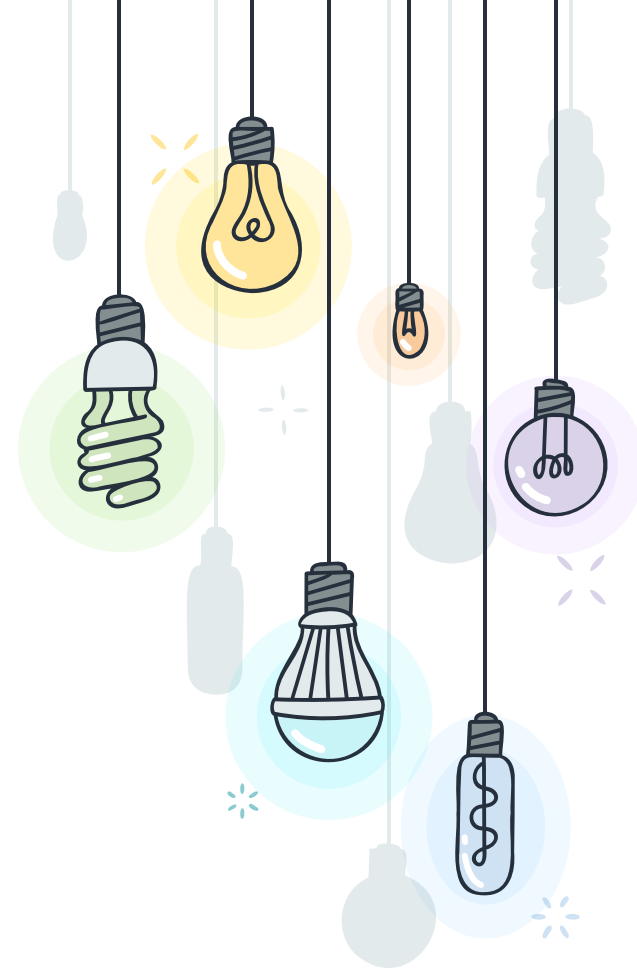


## ✧ CLASSROOM WEBSITE

- + Classroom Information
- + Classroom Calendar
- + Communication Archive
- + Math Homework Help

[young5.weebly.com](http://young5.weebly.com)

Also linked on your  
student's Clever page!



# \* PLANNERS & TAKE HOME FOLDERS

## Planners

- + Filled out each day with our learning & any homework assignments
- + Building responsibility & organizational habits
- + Keeping parents in the loop

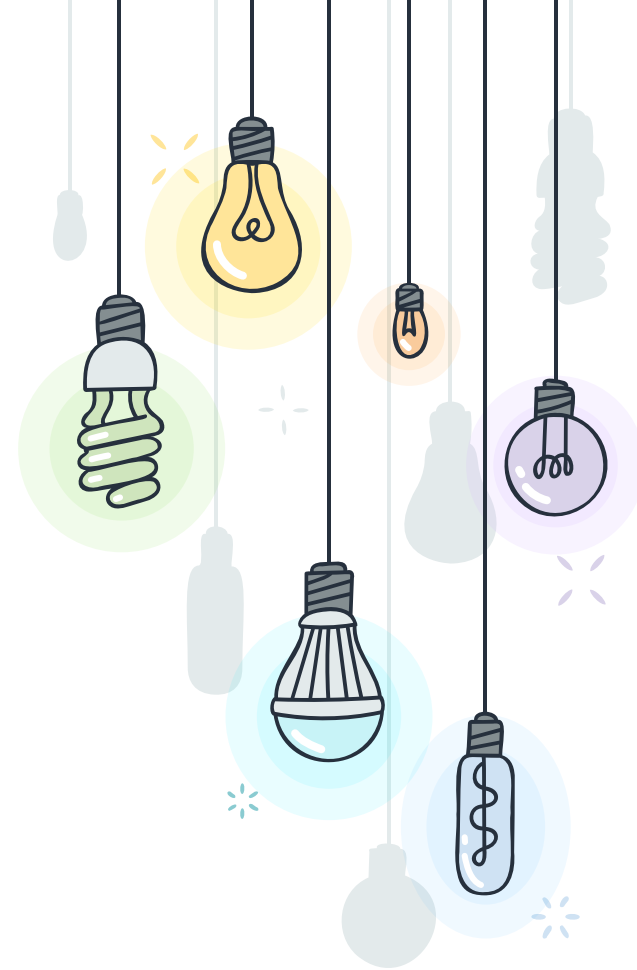
## Take Home Folders

- + Come home each day
- + School-wide info, homework, completed assignments, etc.
- + Create a system at home for what students should do with folder contents!



## \* HOMEWORK

- + Aim for reading 30 minutes each night (no log)
- + Math HW – Tuesdays & Thursdays
  - × Quick student self-assessment for understanding
  - × Building good habits
  - × **HW Help on Classroom Website**
- + Absent work/incomplete work





## WHAT CAN MY STUDENT DO IF THEY MISS SCHOOL?

### Per our student handbook:

- + Homework will be given upon student's return to school
- + Students have one day for every day of absence to complete
- + Teacher will work closely with student to ensure all make up work is completed

### At Home Options:

- × Zearn Lessons
- × iReady Math Lessons
- × iReady Reading Lessons
- × Access current writing piece on Teams
- × Independent reading



## ✧ ABSENCES, DISMISSAL CHANGES, APPOINTMENTS, ETC.

- + It is always helpful to have a heads up! 😊
  - × **Best practice:** Email the office [iveattendance@issaquah.wednet.edu](mailto:iveattendance@issaquah.wednet.edu) & include me as well
- + Please be sure to communicate any changes to dismissal plans - the earlier the better is helpful! For student safety, we cannot send a kiddo home a different way if we haven't heard from the parent.



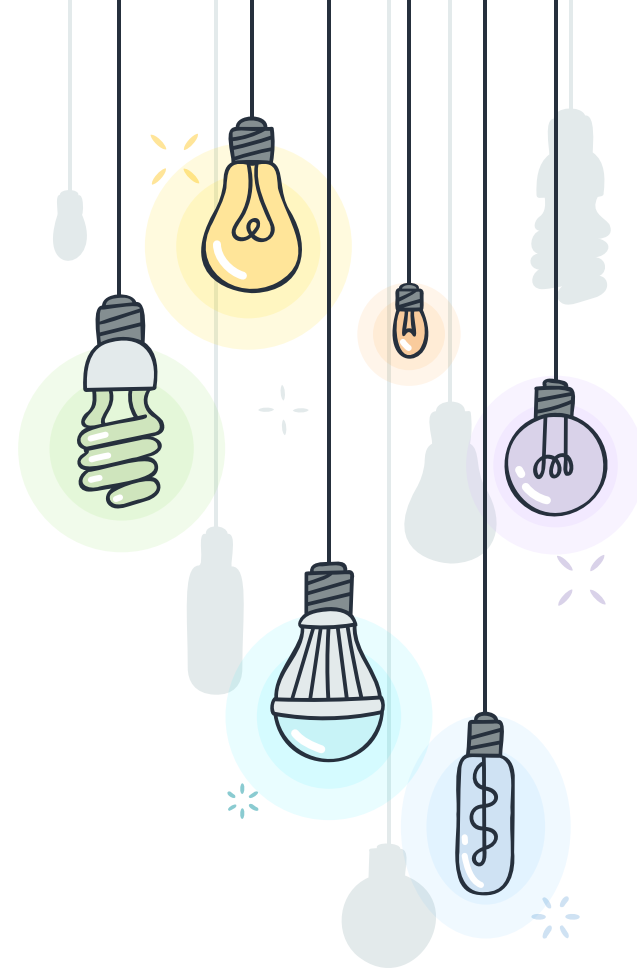
## ✧ OUR CLASS CONTRACT

- + Follow IVE Cougar Code – Be safe, respectful, responsible, and kind
- + Be yourself and allow others to be themselves
- + Be mature & independent - make good choices
- + Pay attention, be prepared, & use your time wisely
- + Try your best & never give up



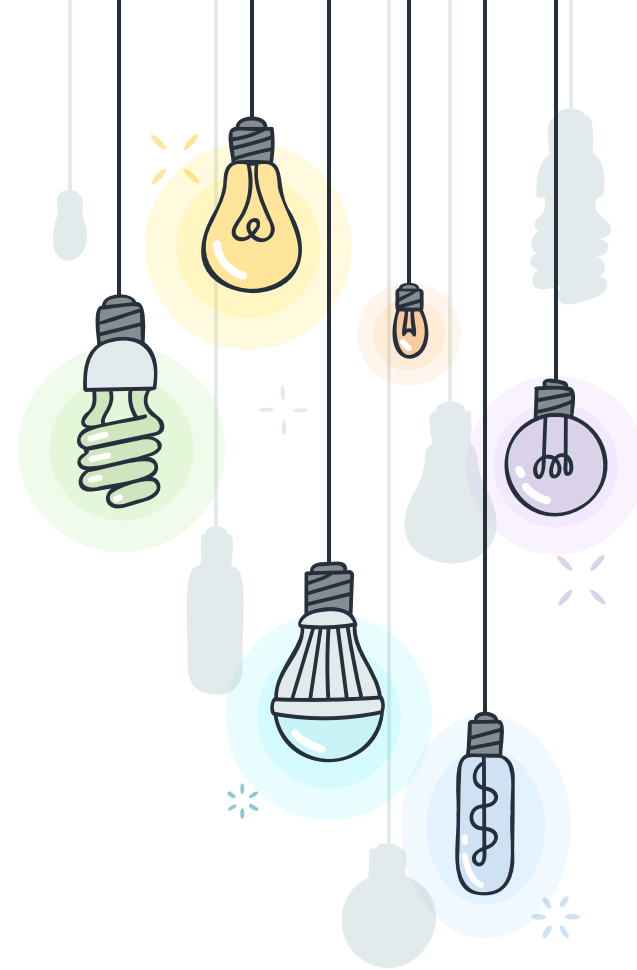
## \* SNACKS

- + No set snack time - students may snack as needed during work times
- + Healthy snacks that don't require utensils & are easy to clean up
  - × Fruit slices, veggies, crackers, etc.
  - × No nuts, please - at lunch is fine!



## ✦ HEADS UP! CONFERENCES

- + Student Led
- + November 8<sup>th</sup> & 9<sup>th</sup>
- + Sign ups will be in Skyward
- + Work together as a team – student, parent, and teacher
- + Empowering students to take ownership of their own learning



## SEMESTERS & REPORT CARDS

- + Elementary will move to semesters
- + Why?
  - × With earlier conferences, the change to semesters allows for more timely communication of student progress
  - × Allows fifth grade families to use report card information to inform course selection for middle school
- + What does this mean?
  - × Report Card 1 – February 2, 2024
  - × Report Card 2 – June 18, 2024

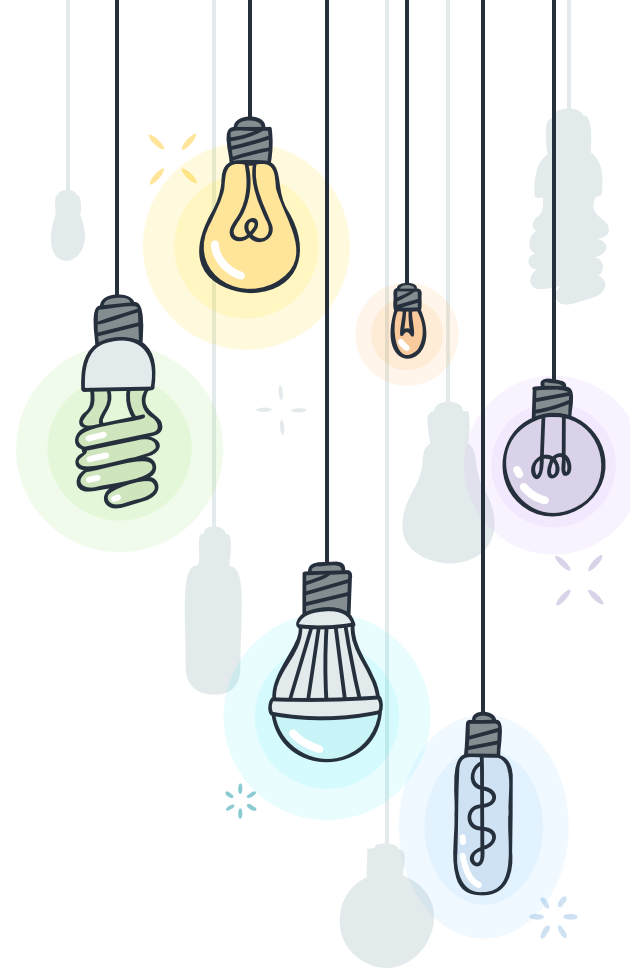
# OUR LEARNING



## \* READING

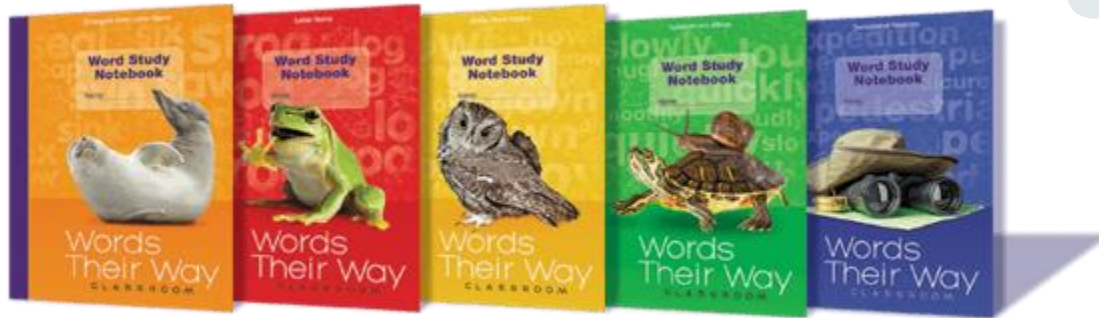
- + Unit 1 – Interpretation Book Clubs: Analyzing Theme
- + Unit 2 – Tackling Complexity: Moving Up Levels of Nonfiction
- + Unit 3 – Argument & Advocacy: Researching Debatable Issues
- + Unit 4 – Fantasy Book Clubs

- + Reading Block:
  - × Mini Lesson
  - × Independent Reading Time
  - × Reading Responses
  - × Book Talks



## \* SUCCESS BLOCK

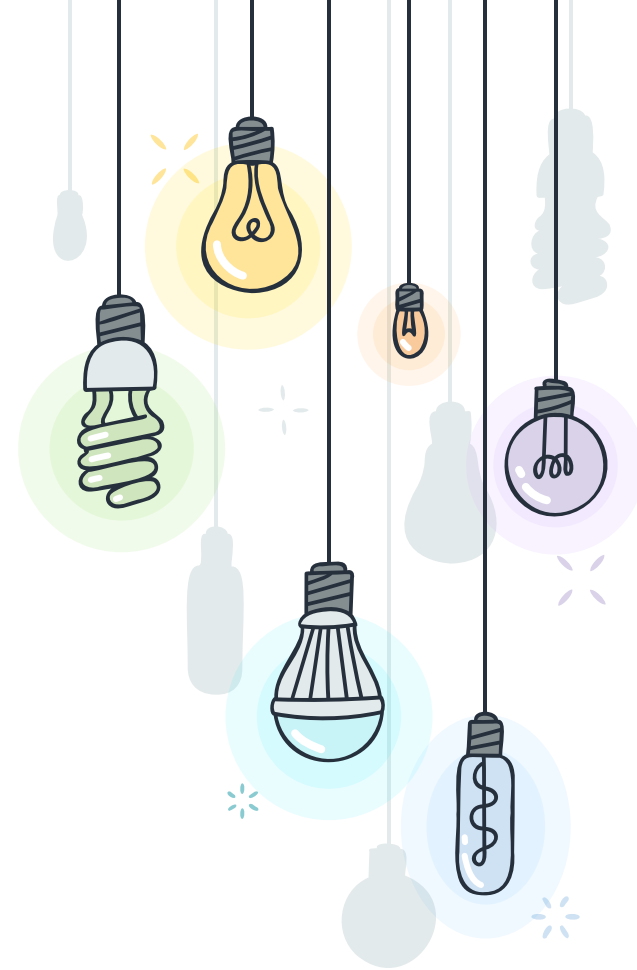
- + Dedicated time for phonics and word study
- + Flexible grouping based on assessments to support students' reading foundational skills

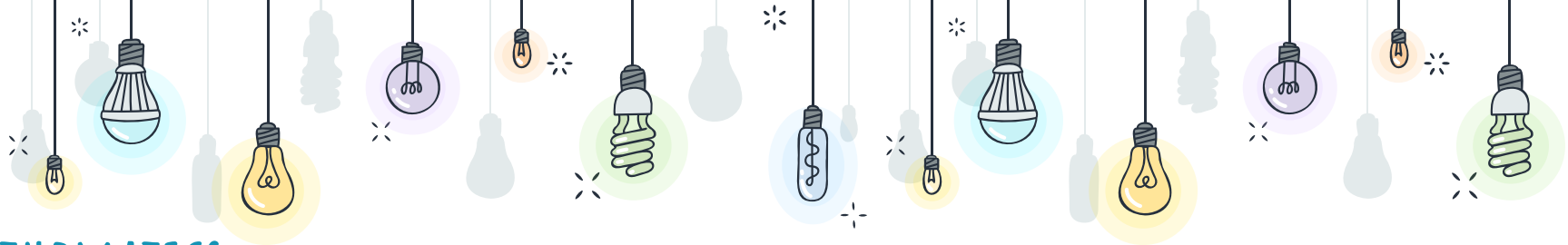




## \* WRITING

- + 4 big writing pieces this year:
  - × Narrative
  - × Informational
  - × Argumentative
  - × Fantasy





## MATHEMATICS

- + Think *flexibly* about numbers
- + Understand *why* the steps work
- + Problem solving strategies
- + Know how to use other strategies when more efficient
- + Module 1 - Place Value and Decimal Fractions
- + Module 2 - Multi-Digit Whole Number and Decimal Fraction Operations
- + Module 3 - Addition and Subtraction of Fractions
- + Module 4 - Multiplication and Division of Fractions and Decimal Fractions
- + Module 5 - Addition and Multiplication with Volume and Area
- + Module 6 - Problem Solving with the Coordinate Plane

## \* I-READY



- + District assessment for both reading & math
- + Used to inform instruction
- + Personalized My Path lessons for each student
- + Diagnostics completed in Fall, Winter, & Spring





## SOCIAL EMOTIONAL LEARNING – 2<sup>ND</sup> STEP

### + Unit 1 – Empathy & Skills for Learning

- × Using self-regulation skills to succeed in school
- × Developing the ability to have empathy
- × Expressing compassion

### + Unit 2 – Emotion Management

- × Identifying and managing strong feelings
- × Using calming down strategies

### + Unit 3 – Problem Solving

- × Solving problems on one's own

## \* SOCIAL STUDIES

- + Inquiry based
- + Multiple perspectives
- + Units:
  - × First People, Encounter, & Colonization
  - × US Revolution
  - × US Government



## \* SCIENCE

- + Using real-world contexts, students investigate, talk, read, write, and think like scientists & engineers
- + Units:
  - × Patterns of Earth & Sky
  - × Modeling Matter
  - × The Earth System
  - × Ecosystem Restoration



## ✧ HOW CAN YOU SUPPORT YOUR STUDENTS LEARNING?

- + Ensure your student is here & on time each day
- + Help set & maintain a routine
- + Reach out to me with any questions or concerns
- + Foster skills like responsibility, independence, organization, and time management
- + Read email communication to stay in the loop

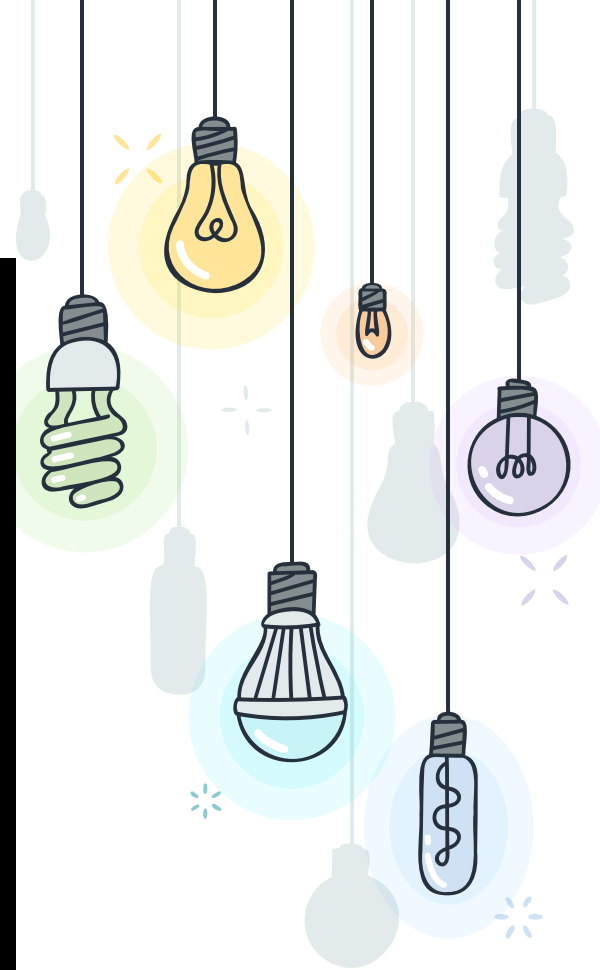
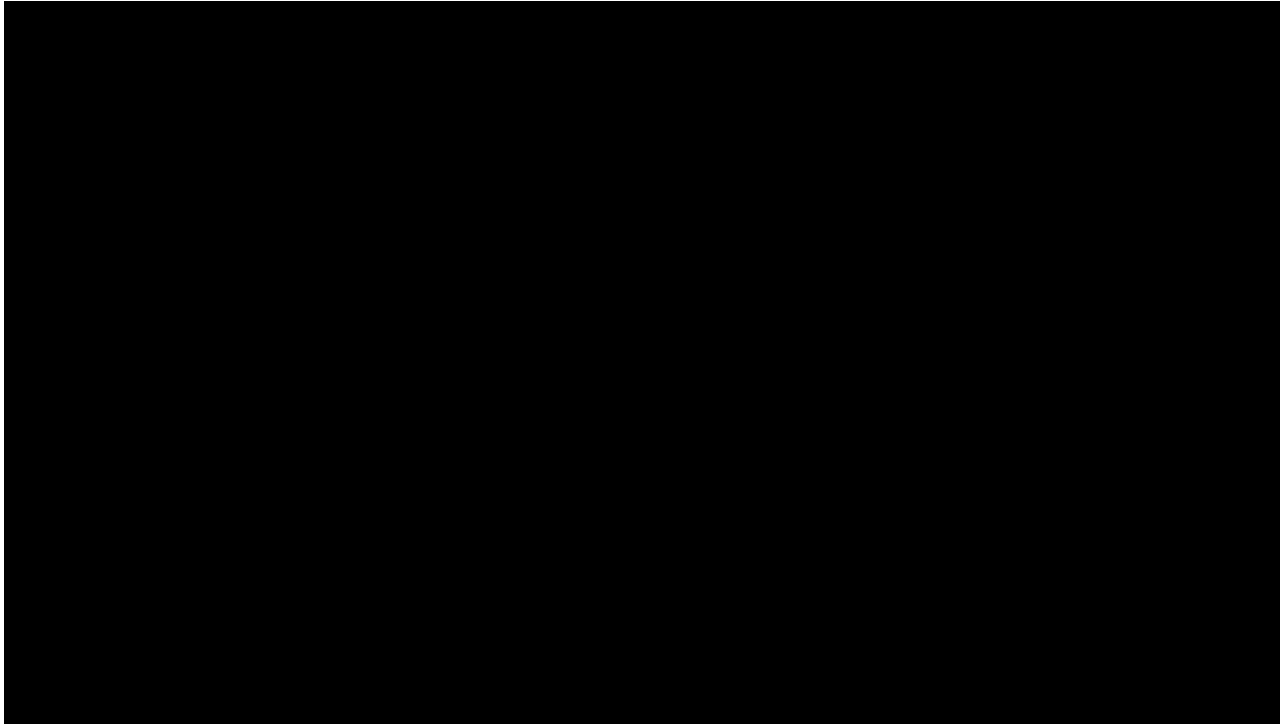


# ADDITIONAL INFO & SUPPORTS





# \* VIDEO FROM ADMIN





# Breakfast @ IVE

Look for Updates in the IVE Weekly Bulletin

01

Breakfast will be free for students who qualify for free or reduced-priced lunch; other students can purchase for \$2.50

02

Breakfast will be served from 9:10 - 9:25 in the MPR. Students will head to class directly from breakfast.

03

Students not purchasing breakfast will start their day in the classroom.

# Sample Menu

## SEPTEMBER 2023

Health-e Pro 

MON	TUE	WED	THU	FRI
				1 <b>Entrees:</b> *Daily Entrée Options  <b>Fruit:</b> Peaches Raisins
4 <b>No School</b>	5 <b>Entrees:</b> *Daily Entrée Options  <b>Fruit:</b> Fruit Cocktail Apple	6 <b>Entrees:</b> Turkey Sausage & Pancake Bite *Daily Entrée Options  <b>Fruit:</b> Mandarin Oranges Craisins	7 <b>Entrees:</b> *Daily Entrée Options  <b>Fruit:</b> Mixed Berry Cup Peaches	8 <b>Entrees:</b> *Daily Entrée Options  <b>Fruit:</b> Pineapple Tidbits Applesauce Cup
11 <b>Entrees:</b> Turkey Sausage Breakfast Sandwich *Daily Entrée Options  <b>Fruit:</b> Oranges Strawberry Cup	12 <b>Entrees:</b> *Daily Entrée Options  <b>Fruit:</b> Pears Apple	13 <b>Entrees:</b> Dutch Waffle & Turkey Sausage *Daily Entrée Options  <b>Fruit:</b> Pineapple Tidbits Raisins	14 <b>Entrees:</b> *Daily Entrée Options  <b>Fruit:</b> Banana Applesauce Cup	15 <b>Entrees:</b> *Daily Entrée Options  <b>Fruit:</b> Grapes Fruit Cocktail
18 <b>Entrees:</b> Turkey Sausage Breakfast Pizza *Daily Entrée Options  <b>Fruit:</b> Pears Craisins	19 <b>Entrees:</b> *Daily Entrée Options  <b>Fruit:</b> Peaches Apple	20 <b>Entrees:</b> Ham, Egg & Cheese Breakfast Combo Bar w/ Cracker *Daily Entrée Options  <b>Fruit:</b> Banana Peach Cup	21 <b>Entrees:</b> *Daily Entrée Options  <b>Fruit:</b> Grapes Mandarin Oranges	22 <b>Entrees:</b> *Daily Entrée Options  <b>Fruit:</b> Raisins Applesauce Cup
25 <b>Entrees:</b> Turkey Sausage Breakfast Burrito w/ Salsa *Daily Entrée Options  <b>Fruit:</b> Oranges Mixed Berry Cup	26 <b>Entrees:</b> *Daily Entrée Options  <b>Fruit:</b> Apple Applesauce Cup	27 <b>Entrees:</b> Turkey Sausage & Pancake Bite *Daily Entrée Options  <b>Fruit:</b> Fruit Cocktail Banana	28 <b>Entrees:</b> *Daily Entrée Options  <b>Fruit:</b> Mandarin Oranges Craisins	29 <b>Entrees:</b> *Daily Entrée Options  <b>Fruit:</b> Pears Apple

### ANNOUNCEMENTS

#### \*Daily Entrée Options:

Select 1 to 2 items from:

Low-fat Yogurt, String Cheese, Sunbutter & Jelly Sandwich, Assorted Whole Grain Cereal, Whole Grain Blueberry Muffin, Assorted Whole Grain Graham Crackers

Each complete meal comes with a choice of 1% white milk or fat free chocolate milk.

Menu Subject to Change.

### MEAL PRICES

Eligible students receive meals at no cost

Student Breakfast = \$2.50

Milk = \$0.50

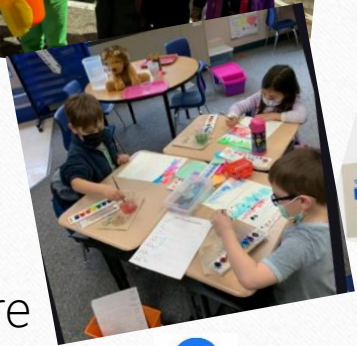
Adult Breakfast = \$3.25

The Issaquah School District provides equal opportunities in its programs, activities and employment.

# IVE PTA

## Fun Things We Do:

- Trunk or treat
- Fun Run
- Art
- Science Fair
- BINGO
- Book Fair
- Staff Appreciation
- Yearbook
- Sprit Wear
- And so much more



## Get Involved!

### Join

Become a member!

### Volunteer

Chair a program

Volunteer for an event or program

Help in your child's classroom

### Participate

Attend PTA events as a family

### Fundraise

Our programs are funded by the generosity of our IVE families and business sponsors!

Find us online! [www.ivepta.org](http://www.ivepta.org)



Issaquah Valley Elementary PTA



Issaquah Valley PTA





ISSAQUAH  
SCHOOLS  
FOUNDATION

## The Issaquah Schools Foundation Supports Your Student from Kindergarten through Graduation

**You Can Help Fuel Student Success.**

**19,000 students. 27 Schools. 110 Square Miles.**



- Academic Support & Enrichment
- Mental & Behavioral Health
- Basic Student Needs
- Teacher Grants
- Dedicated Fine Arts
- Cultural Bridges

Scan Now to Learn More About Programs & Resources  
In Your School



# SCHOOL COUNSELING

Anne Taylor, MA

Phone: 425-837-6656 Email: tayora3@issaquah.wednet.edu

## Mrs. Taylor



**Why:** I work to remove barriers to learning and help make each student feel seen, so that they can reach their potential, and have a positive experience as a member of our IVE community.

### What:

- + Student support: social/emotional, academic, and personal needs
  - x *i.e. Friendship, school anxiety, bullying prevention, emotional regulation, executive functioning, etc.*
- + Crisis support/risk assessments
- + Family support: consultation and resources, financial support
- + 504 Coordinator
- + New student support

**When & Where:** Monday-Friday  
8:30-4pm Rm. 215

**How:** School-wide learning, classroom lessons, groups, and individual check-ins

- + Student referral
- + Parent referral
- + Teacher/staff referral

*We'd love to know if families need support or resources. Please use the QR code if you'd like to fill out our **Needs Assessment**.*



MLL

Multilingual Learners



# MEET THE MLL TEACHERS



## + Mercedes Mandich

- × Hi! I hope you had a great summer! This is my second year teaching at IVE and my sixth year teaching in Issaquah School District. Some things I enjoy are reading, hiking with my dogs, and gardening. I look forward to connecting with you soon!

## + Jacqueline Runnels

- × This is my second year teaching MLL at IVE, and my seventh year teaching, I am excited to see all the kiddos! I live with my husband and son here in Issaquah. We love to spend time outside exploring. I also enjoy reading, learning new things, and watching tv and movies.

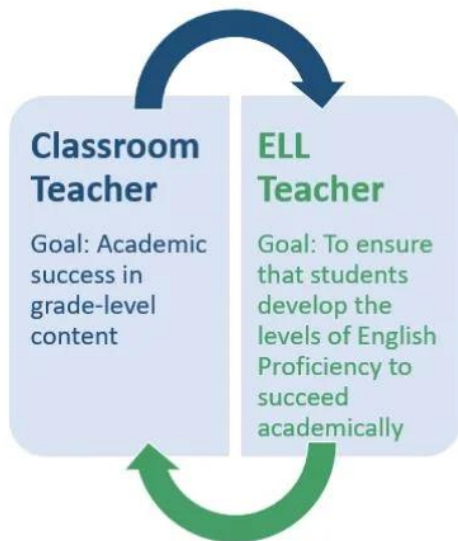


# WHAT IS MLL?

## What is English Language Development (ELD) and how does it connect to content instruction?

### Core Content Teacher Expertise:

- Core content knowledge
- Specialized methods and techniques for teaching content areas
- Core content standards
- Core content curriculum with grade-level expectations
- Well-organized knowledge of concepts and inquiry procedures
- Standardized assessments in the core content area



Dove and Honigsfeld, 2017

### ELL Teacher Expertise:

- Second-language acquisition theories and methodologies
- Instructional models to build English Language Proficiency
- Knowledge of linguistics, such as language variations
- Standards for English language development
- Methods and techniques for literacy and language teaching
- Cultural understanding

# I'm Liliana Medina - Your Family Liaison

## I can help you with the following:

- \*Questions about the school or the school system in the U.S
- \*Filling out Free or Reduced Lunch forms
- \*Questions about the school and don't know where to start
- \*Resources from the food bank
- \*I can help families that don't have English as their first language
- \*Connecting you with teachers, administrators, counselors, and nurses if you don't know how to do it yourself
- \*I refer families with economic difficulties to resources that can support them.

Please contact me; I will be glad to meet and support you.

Call: 425-8377141

Text: 425-331-9555

Email: [medinal@issaquah.wednet.edu](mailto:medinal@issaquah.wednet.edu)



I belong to the Equity and Family Partnership Department.

We bring workshops throughout the school year to help families new to the public school system navigate the system and recognize opportunities, as well as teaching about parents' rights and responsibilities.



ISSAQUAH  
SCHOOL DISTRICT 411

# Soy Liliana Medina - Su Enlace Familiar



## Puedo ayudarlo con lo siguiente:

- \*Preguntas sobre la escuela o el sistema escolar en los EE. UU.
- \*Llenado de los formularios de Almuerzo Gratis y a precio Reducido
- \*Si tiene preguntas sobre la escuela y no sabe por dónde empezar
- \*Recursos del banco de alimentos
- \*Puedo ayudar a las familias que no tienen el inglés como primera lengua
- \* Conectándolo con maestros, administradores, consejeros y enfermeras si no sabe cómo hacerlo usted mismo
- \*Refiero a familias con dificultades financieras a recursos que pueden apoyarlos.

Pertenezco al Departamento de Equidad y Asociaciones Familiares.

Brindamos talleres durante todo el año escolar para ayudar a las familias nuevas en el sistema de escuelas públicas a navegar por el sistema y reconocer oportunidades, así como enseñar sobre los derechos y responsabilidades de los padres.

Por favor contacteme; estare encantada de conocerlos y apoyarlos

Llame al: 425-8377141

Texto: 425-331-9555

Correo: [medinal@issaquah.wednet.edu](mailto:medinal@issaquah.wednet.edu)



**ISSAQUAH**  
SCHOOL DISTRICT 411

# THANK YOU!

[youngk@issaquah.wednet.edu](mailto:youngk@issaquah.wednet.edu)

[young5.weebly.com](http://young5.weebly.com)

